

Luminaire Data Sheet

EBH



A range of classically styled emergency bulkheads which can be surface mounted or semi-recessed. Suitable for a wide range of applications, tough and versatile.

- Available as maintained or non-maintained.
- 20mm conduit entry.
- IP65/IK10
- Cable gland and legend pack included.
- Recessing kit available.
- Remote control compatible.
- 8 year warranty including battery.
- Option for DALI
- Option for Self Test



Detail	EBH200	EBH300
Mains Frequency	50 / 60 Hz	50 / 60 Hz
Max. Power Consumption	5W	5W
Standby Power	< 0.5W	< 0.5W
Emergency Output Power	1.5W	3.0W
Lumen Output	192	321
Rated Emergency Duration	3 hours	3 hours
Battery Charge Time	< 20 hours	< 20 hours
Operating Temperature	0 to 40°C	0 to 40°C
Insulation Class	Class II	Class II
Ingress Protection	IP 65	IP 65
Impact Protection	IK 10	IK 10
Dimensions (L x W x H)	355 x 109 x 61mm	355 x 109 x 61mm
Battery Compatibility	2 x 18650 Li-ion 3.6V 5.0Ah	2 x 18650 Li-ion 3.6V 5.0Ah
Lens Type / Beam Angle	Reed diffuser / 108° x 100°	Reed diffuser / 108° x 100°
Rated Supply Voltage	220-240V AC	220-240V AC



Luminaire Data Sheet

EBH



SELF - TEST

Green LED	Red LED	Status
On	Off	Standby
Slow Flash	Off	Charging
Fast Flash	Off	Function test or duration test in progress
Off	On	Battery Disconnected / Duration Test
Off	Fast Flash	Battery temp out of operational range
Off	Slow Flash	Light source failure

DALI-2

Green LED	Red LED	Status
On	Off	Standby
Slow Flash	Off	Duration test in progress
Fast Flash	Off	Function test in progress
Off	On	Battery temp out of operational range
Off	Slow Flash	Battery disconnected / duration test failed
Off	Fast Flash	Battery low voltage
Off	Off	Emergency function in operation
Alternating	G > R > G	DALI-2 identifying code.

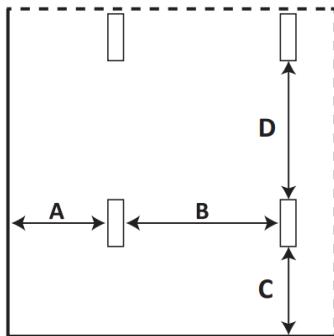
Materials

Housing	Polycarbonate
Finish	Matt
Colour	White
Screws	Nickel Steel

LED Light Source

Type	2835
CCT	4000K
CRI	>80
LED Lifetime	50000 hrs

Open (Anti-Panic) Areas

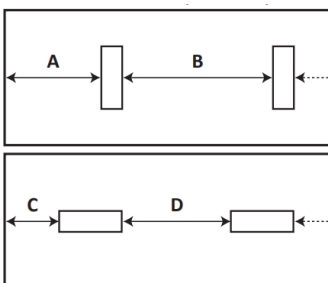


Luminaire spacing for undefined escape routes and open (Anti panic) areas

Mounting Height	A	B	C	D
2.5	4.2	10.3	3.9	9.5
3	4.2	11.2	4.3	10.4
4	5.0	12.6	4.7	11.8
5	5.2	13.7	5.0	12.9
6	5.2	14.4	5.1	13.7
7	5.0	14.8	5.0	14.2
8	4.7	14.9	4.6	14.4
9	4.1	14.7	4.1	14.4
10	3.1	14.3	3.0	14.1

Calculated to achieve 0.5 lux min

Escape Routes (2m wide)



Luminaire spacing for escape routes

Mounting Height	A	B	C	D
2.5	3.4	8.5	3.2	7.9
3	3.5	9.1	3.4	8.6
4	3.7	10.0	3.6	9.5
5	3.5	10.5	3.5	10.1
6	3.1	10.5	3.1	10.2
7	2.3	10.1	2.2	10.0

Calculated to achieve 1.0 lux min

Note: Values shown are for guidance only

